

KNOTWOOD

IT'S NOT WOOD - IT'S ALUMINUM

Cladding

Non-combustible, strong and with a finish designed to last a lifetime; Knotwood cladding is ideal for fire-zones and seaside homes. The durable finish also makes it the cladding material of choice for commercial projects when you need the winning combination of strength, practicality and eye-catching good-looks.



KNOTWOOD

IT'S NOT WOOD - IT'S ALUMINUM

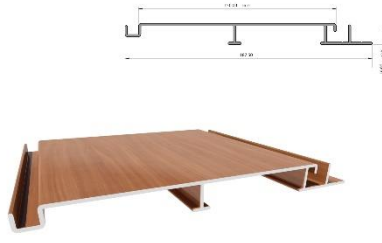
Profiles

Cladding comes in 18'6" lengths in any available Knotwood or powder-coat finish. Accessories come in 18'6" lengths. Always consult the appropriate building codes when designing/constructing substructures.



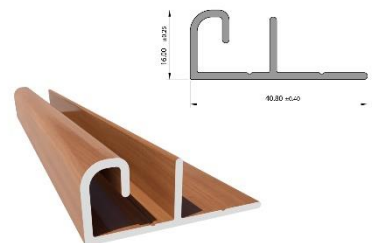
KED90 - 90x16 (3-3/4" x 5/8" Interlocking Decking/Cladding)

DISCONTINUED



KED150 - 150x16 (6" x 5/8" Interlocking Decking/Cladding)

STOCK



KEDSTR - (18'6" Decking/Cladding Starter Strip)

STOCK



KECFBF - (18'6" Decking/Cladding Female Flashing Base)

STOCK



KECFTTLM - (18'6" Decking/Cladding Male Flashing Top Clip)

STOCK



KECFJBF - (18'6" Decking/Cladding Female Joiner Base)

STOCK



KECTJM - (18'6" Decking/Cladding Male Top Joiner)

STOCK



KECIECM - (18'6" Decking/Cladding Male Internal/External Corner)

STOCK



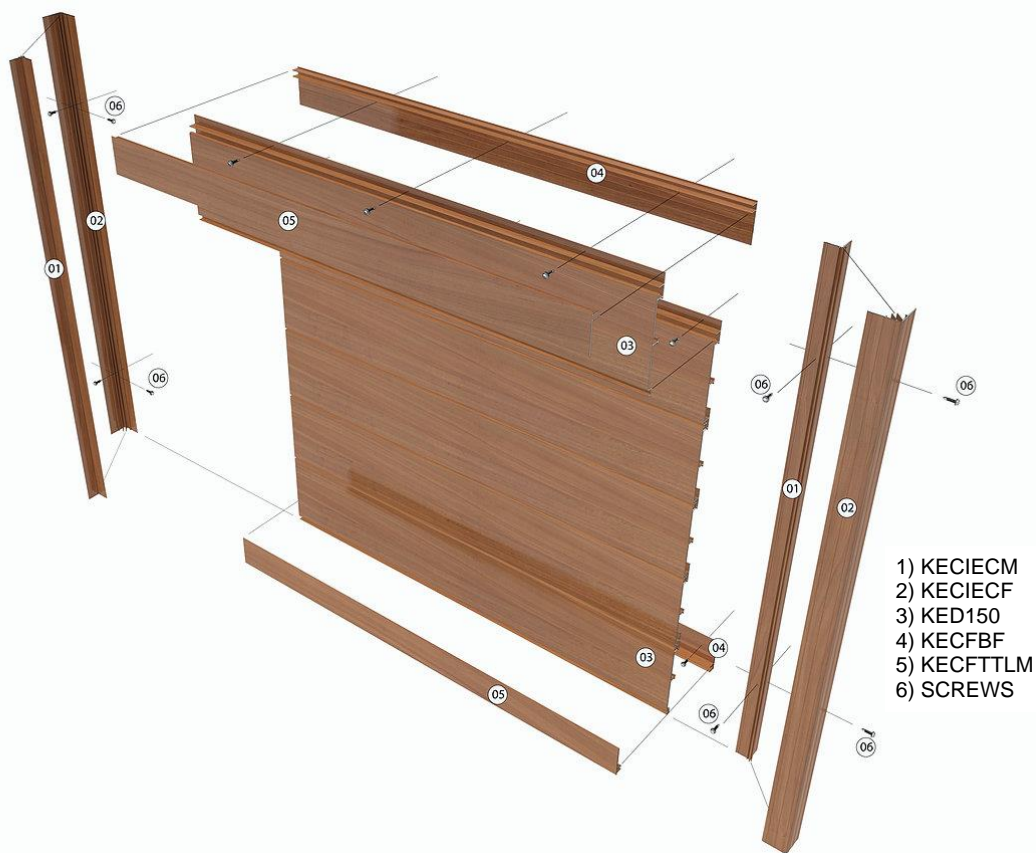
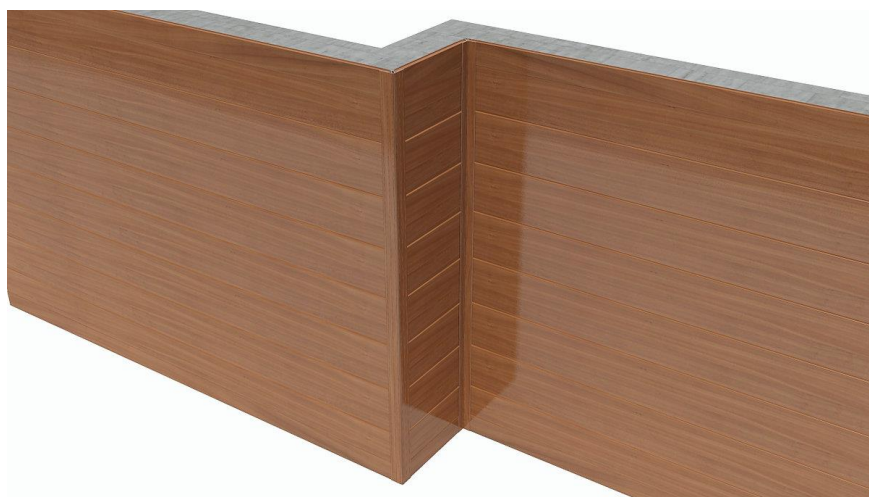
KECIECF - (18'6" Decking/Cladding Female Internal/External Corner)

STOCK

KNOTWOOD

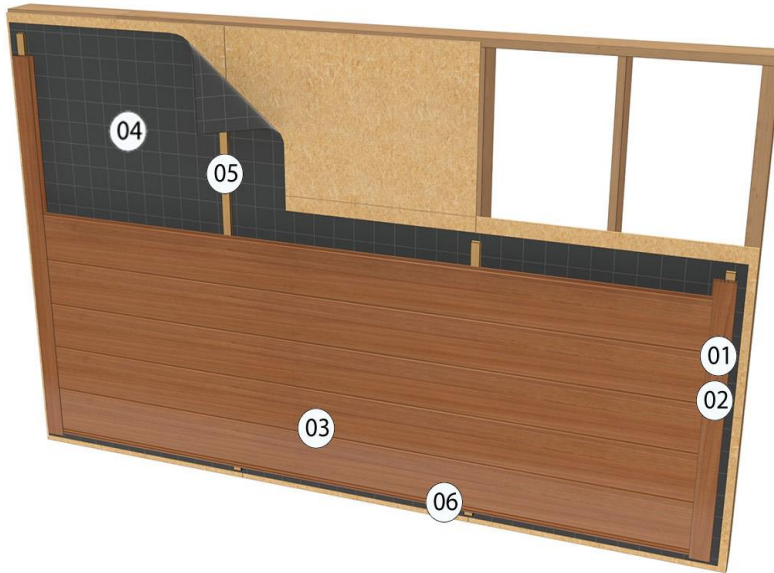
IT'S NOT WOOD - IT'S ALUMINUM

Installation



KNOTWOOD

IT'S NOT WOOD - IT'S ALUMINUM



- 1) KECIECM
- 2) KECIECF
- 3) KED150
- 4) Rain Screen
(Per Spec)
- 5) Battens
[6"] Center
(Per Spec)
- 6) KEDSTRADJ

Starter Piece



- 1) KEDSTRADJ
- 2) KED150

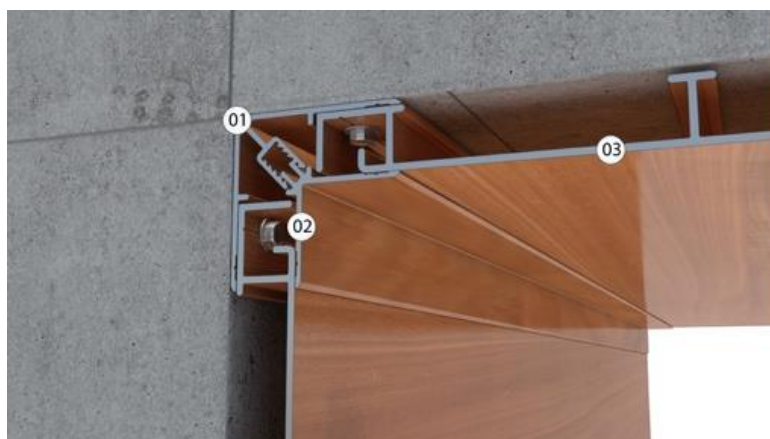
KNOTWOOD

IT'S NOT WOOD - IT'S ALUMINUM



- 1) KEDSTRADJ
- 2) KED150

Inside Corner



- 1) KECIECF
- 2) KECIECM
- 3) KED150

KNOTWOOD

IT'S NOT WOOD - IT'S ALUMINUM

Outside Corner



- 1) KECIECF
- 2) KECIECM
- 3) KED150

Finishing Pieces



- 1) KECFTTLM
- 2) KECFBF
- 3) KED150

KNOTWOOD

IT'S NOT WOOD - IT'S ALUMINUM

Battens and Trellis

Knotwood's Clip-Batten system is as revolutionary as it is eye-catching. The built in bracket forms part of the batten, hiding all the fixings and eliminating the need for visible brackets or angle fixings. Extremely useful in a commercial cladding application or for use as architectural features and trellis, this system will take your project to the next level.



KNOTWOOD

IT'S NOT WOOD - IT'S ALUMINUM

Profiles

Clip Batten Profiles are designed for spans of up to 18' 6" without a joint. Wind loadings may vary in different regions. Consult an engineer if unsure about the systems viability for a specific application. Profiles come supplied in any available color in an 18' 6" standard length.



KEB5050F - 50x50 (2" x 2" Batten Part B)
STOCK



KEB10050F - 50x100 (2" x 4" Batten Part B)
STOCK



KEB15050F - 50x150 (2" x 6" Batten Part B)
STOCK



KEB20050F - 50x200 (2" x 8" Batten Part B)
STOCK



KEB5050M - 50x50 (2" x 2" Batten Part A)
STOCK

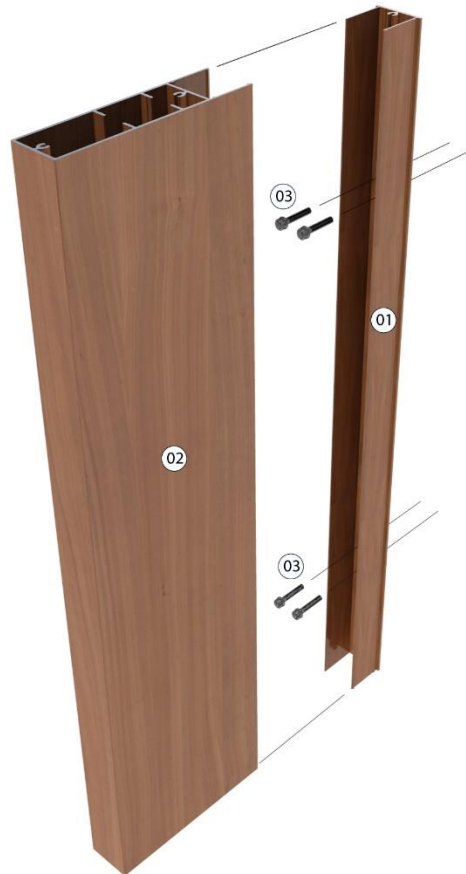
KNOTWOOD

IT'S NOT WOOD - IT'S ALUMINUM

Installation

Any Part B can be used with the Part A Bracket. Installation Guides are for reference only.

Architectural Battens



- 1) KEB5050M
- 2) KEB15050F
- 3) SCREWS

- 1) Attach KEB5050M to wall.
- 2) Clip KEB15050F onto the KEB5050M.
- 3) Repeat until complete.

