

PX-5 TECHNICAL INFORMATION

System Depth: 1" Nominal

Material: 0.080" Thick 3003 aluminum alloy (other gauges available)

Panel Joints: 1/2" Nominal standard (custom available)

Finishes: Duranar coatings - 70% fluoropolymer resin (Solids, Micas, Metallics, Custom Woodgrains, Anodized & El Zinc)

Finish Warranty: 20 Years painted, 5 years anodized

Weight: Approximately 1.6 lbs/Sq.Ft.

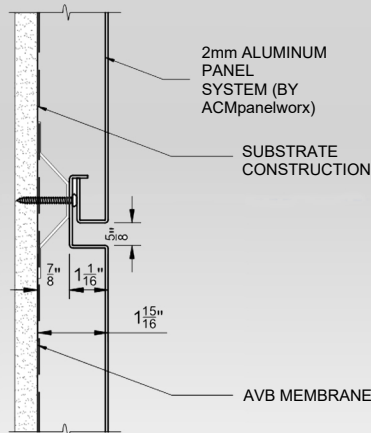
Panel Modules: The PX-5 panel system offers unique modular interlocking details that virtually eliminate site measuring and custom fabrication lead time delays. The modular design increases installation productivity up to 40%

Panel Sizing:

- 24" x 24"
- 24" x 48"
- 12" x 96"
- 16" x 96"
- Custom sizes available

System Testing:

- ASTM E283-04
- ASTM E331-00
- ASTM E330-02



The PX-5 modular design is a compliment to ACMpanelworx' high quality metal panel system products, especially when project budgets may be a concern. PX-5 panels can be installed in a grid like pattern, or a staggered brick pattern, vertically or horizontally. The non-combustible properties of solid aluminum, endless palette of colors to choose from, as well as product versatility makes PX-5 a superb economical solution for modern day construction needs.